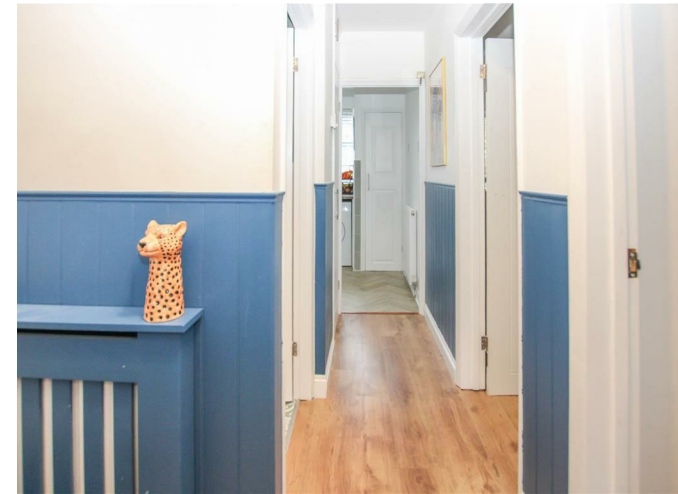




**Keith
Ashton**

Cromwell Road, Warley
Brentwood



94 CROMWELL ROAD Warley Brentwood, CM14 5DZ

We are pleased to bring to market this well presented, ground-floor maisonette featuring a generously sized sitting room, a contemporary kitchen, two well-proportioned bedrooms, and modern bathroom. A standout feature is the private, south facing garden, offering a tranquil outdoor space and driveway providing off street parking to the front. Conveniently situated within walking distance of Brentwood High Street and less than half a mile from Brentwood train station providing excellent transport connections to London and beyond.

- GROUND FLOOR MAISONETTE
- TWO BEDROOMS
- SPACIOUS SITTING ROOM
- PRIVATE SOUTH FACING REAR GARDEN
- WELL PRESENTED THROUGHOUT
- WITHIN HALF A MILE OF BRENTWOOD STATION
- HIGHLY REGARDED SCHOOLS NEARBY
- OFF STREET PARKING FOR TWO CARS

Offers In Excess Of £315,000



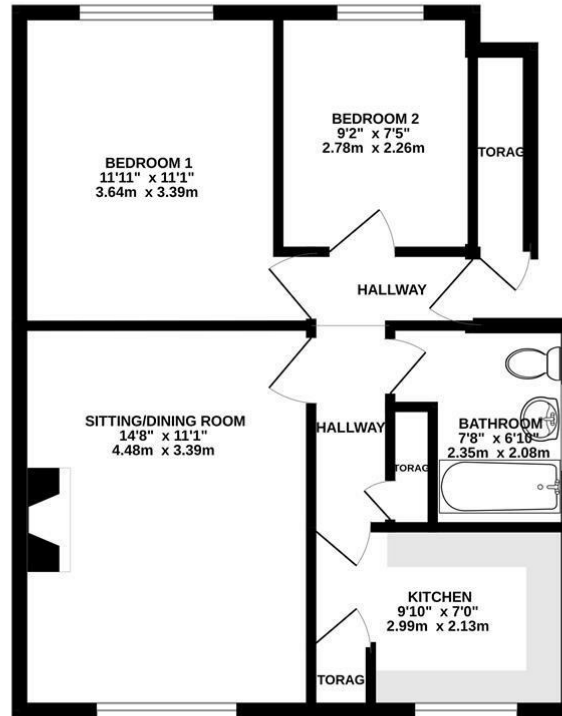
Description

The internal layout begins with a welcoming hallway that provides access to all rooms. At the front of the property, the spacious sitting room boasts a large window that bathes the space in natural light, creating a bright and inviting atmosphere. The contemporary kitchen is thoughtfully designed, featuring a range of eye and base-level units, as well as generous worktop space. Both bedrooms are well-proportioned and enjoy views out to the private rear garden, while a modern bathroom completes the accommodation.

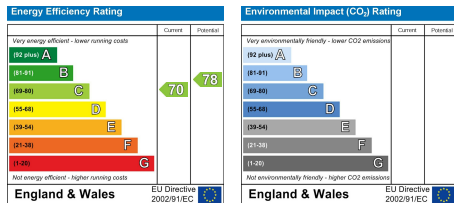
Outside, the private rear garden is primarily laid to lawn, complemented by a paved patio area ideal for outdoor relaxation, along with a small shed for additional storage. At the front, a shingle driveway provides off-street parking for two cars, ensuring convenience and practicality.



GROUND FLOOR
525 sq.ft. (48.7 sq.m.) approx.



TOTAL FLOOR AREA: 525 sq.ft. (48.7 sq.m.) approx.
Measurements are approximate. Not to scale. Illustrative purposes only.
Made with Metropix ©2025



SERVICES:

Local Authority: Brentwood
Council tax band: B
Post code: CM14 5DZ

VIEWING:

Strictly by prior arrangement with Keith Ashton Estate Agents

OPENING HOURS:

Monday to Friday: 8.45AM - 6.30PM | Saturdays: 9AM - 5.30PM | Sundays: 10AM - 2PM

MORTGAGE INFORMATION: We offer the additional facility of an in-house Independent Financial Adviser who will access all mortgage lenders with the purpose of providing you with the benefit of choice. For quotations or comparables please call 01277 260858 or visit our interactive website at www.mortgagebusiness.net



We the Agent have not tested any apparatus, fittings or services for this property. The plot size is intended merely as a guide and has not been officially measured or verified by the Agent. Photographs are for illustration only and may depict items which are not for sale or included in the sale of the property. As part of the service we offer we may recommend ancillary services to you which we believe may help you with your property transaction. We wish to make you aware, that should you decide to use these services we will receive a referral fee. For full and detailed information please visit 'terms and conditions' on our website www.keithashton.co.uk

Brentwood
Tel. 01277 260858

Village Office
Tel. 01277 375757

Lettings Office
Tel. 01277 202200

Explore more @ www.keithashton.co.uk